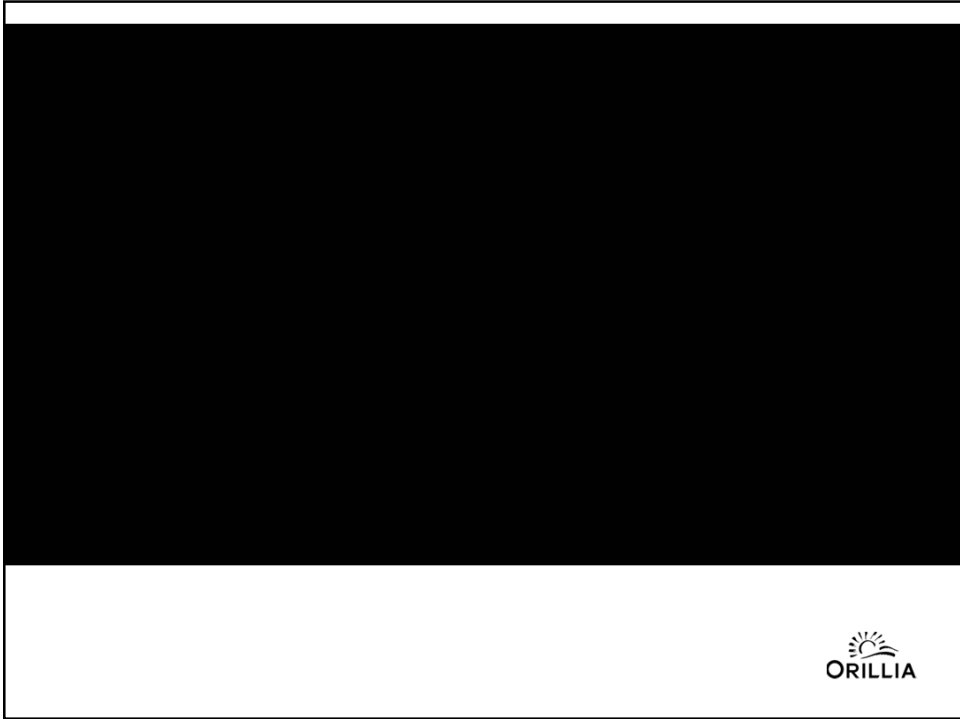


1



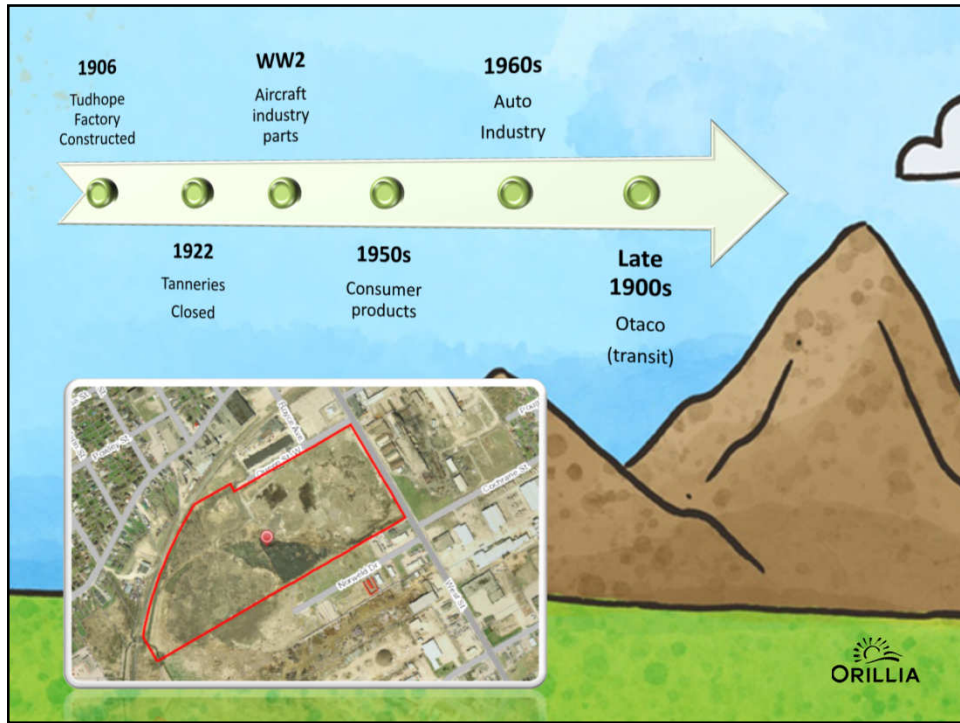
2



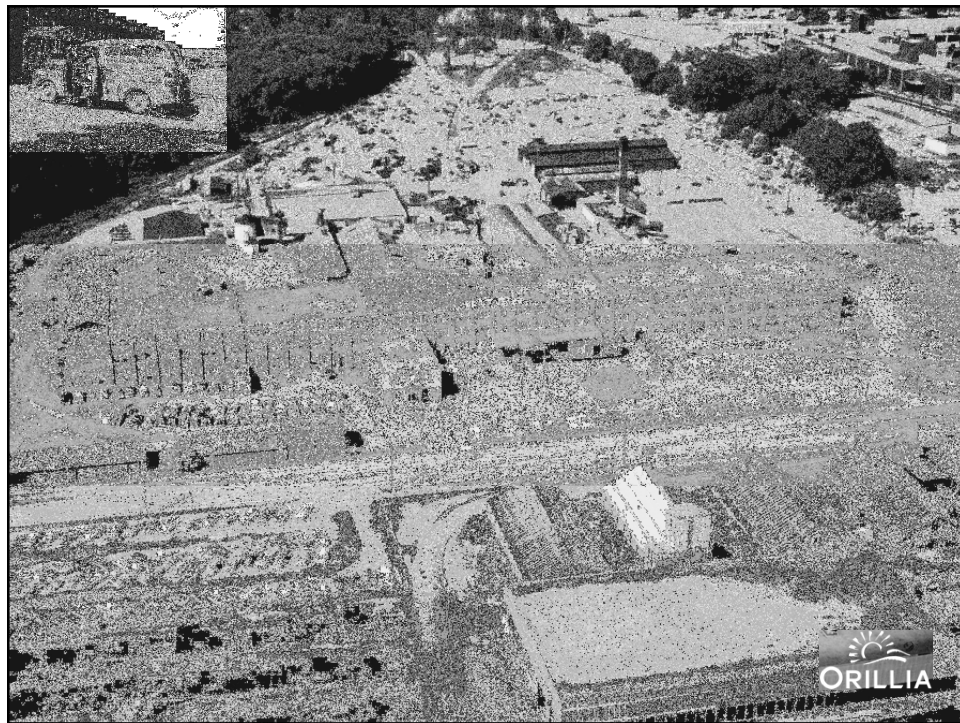
3



4



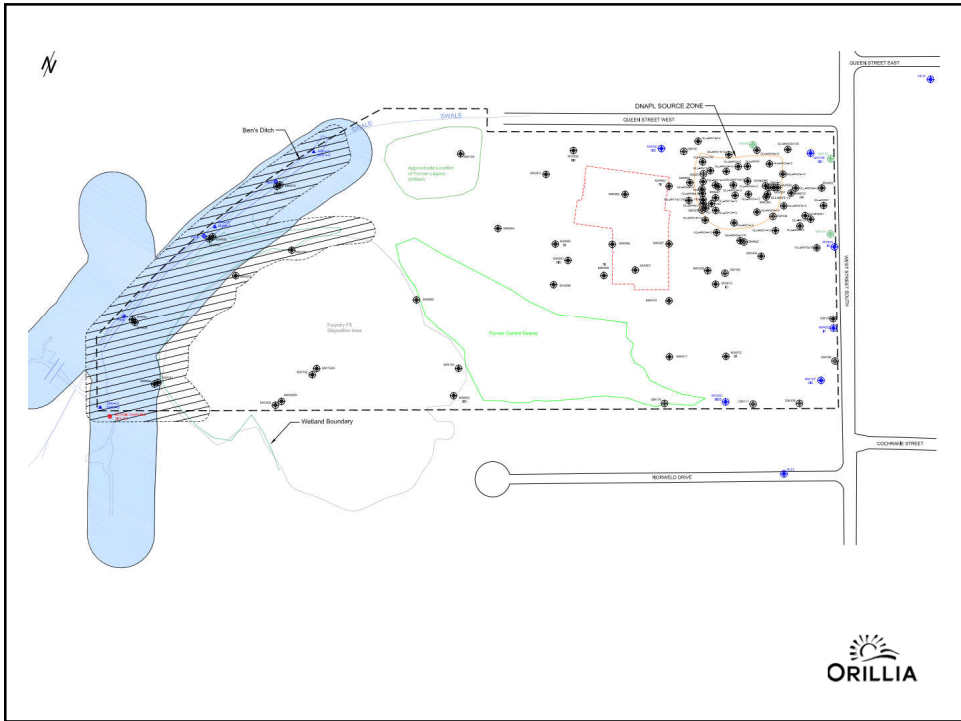
5



6



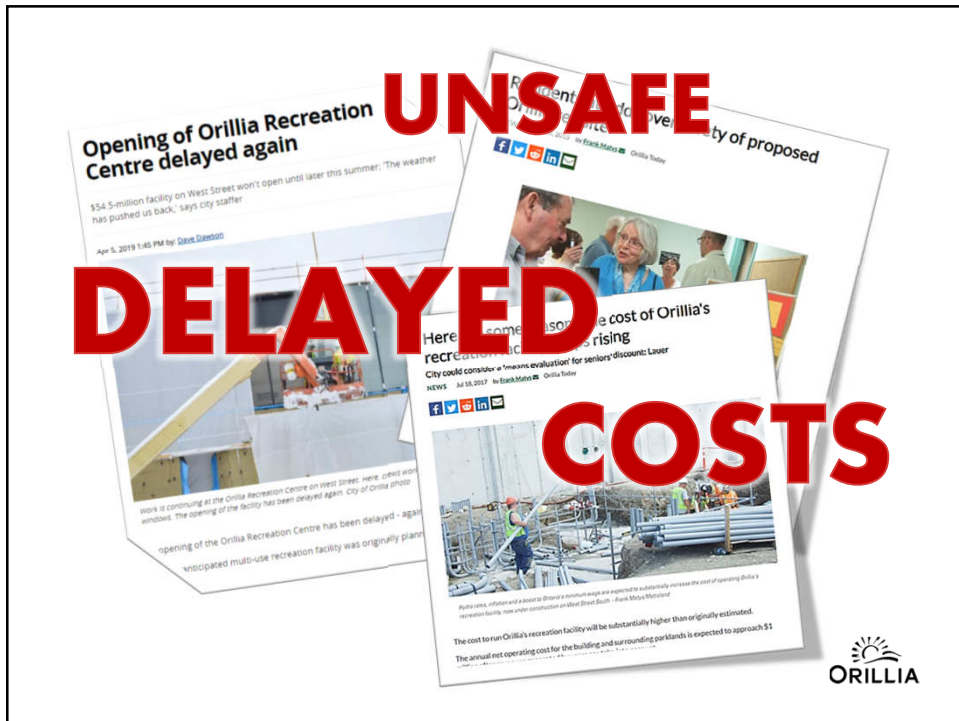
7



8



9



10



11



12



13



14



15



16





17



18

# Orillia brings home a Brownie award

NEWS Nov 30, 2016 Orillia Packet and Times



Members of Orillia city council gather around the trophy presented to the city Tuesday for winning at the 2016 Brownie Awards. Pictured, from left to right: Coun. Tim Lauer, Coun. Ted Emond, Mayor Steve Clarke, Coun. Pat Hehn, Coun. Sarah Valiquette-Thompson and Coun. Jeff Clark. PATRICK BALES/THE PACKET & TIMES



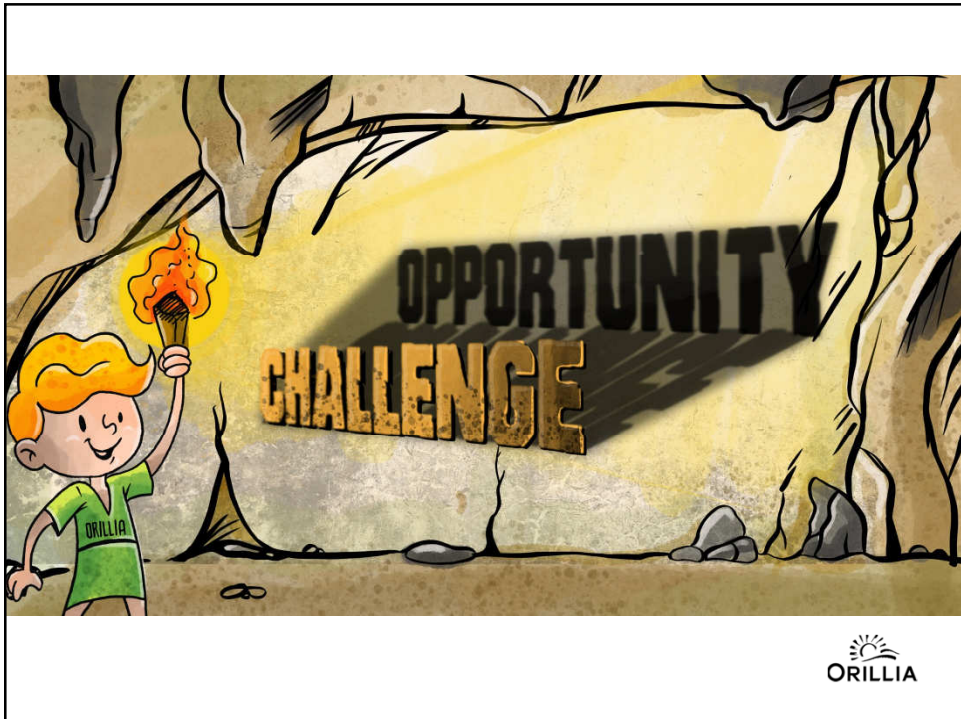
19



20



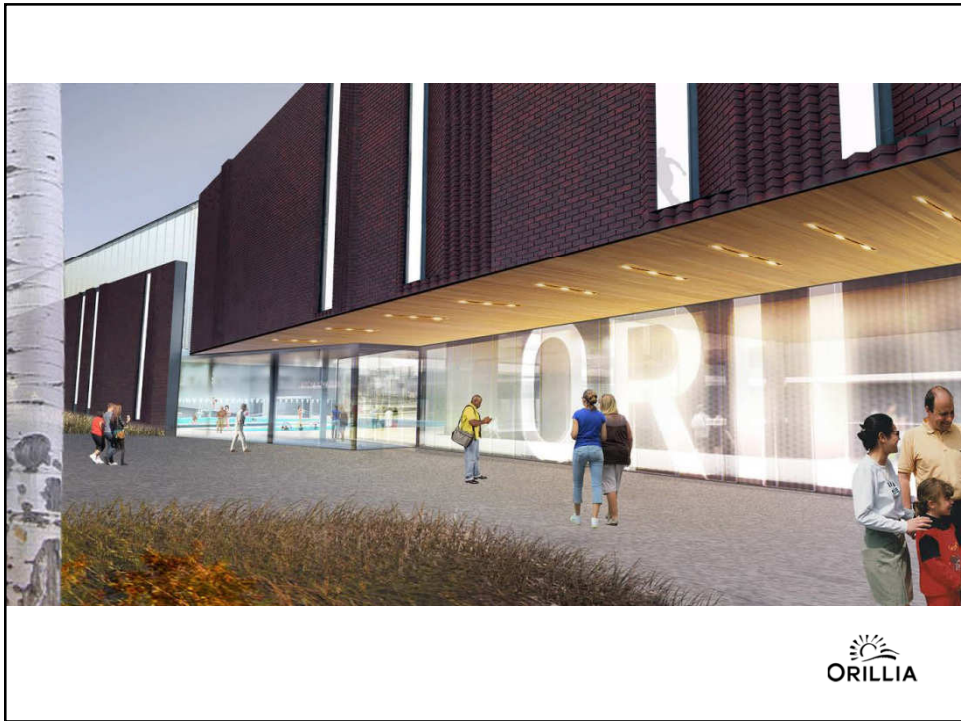
21



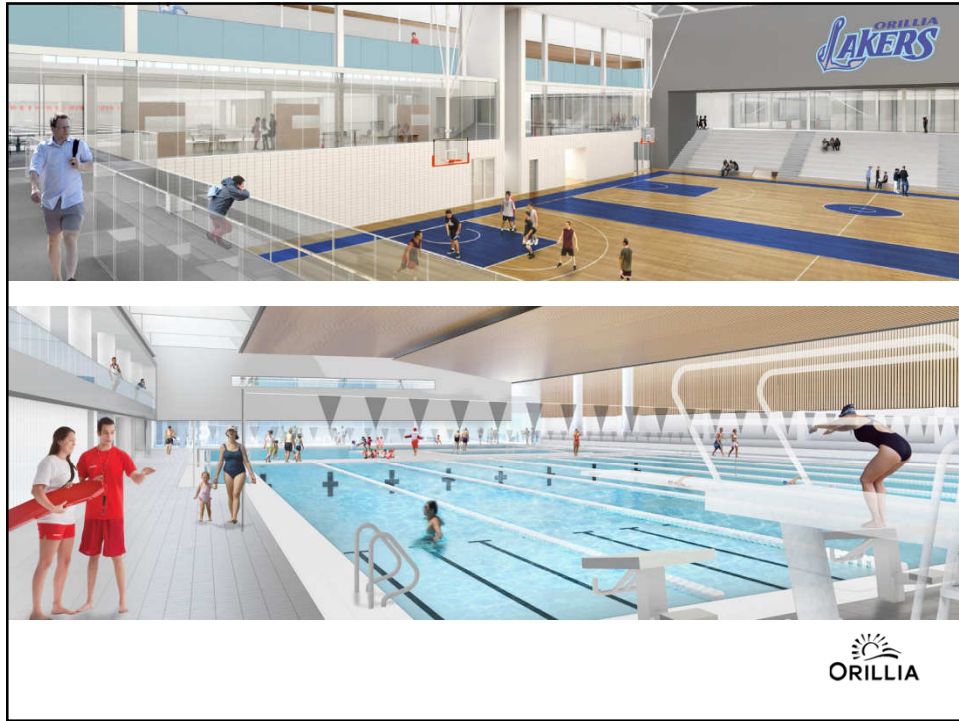
22



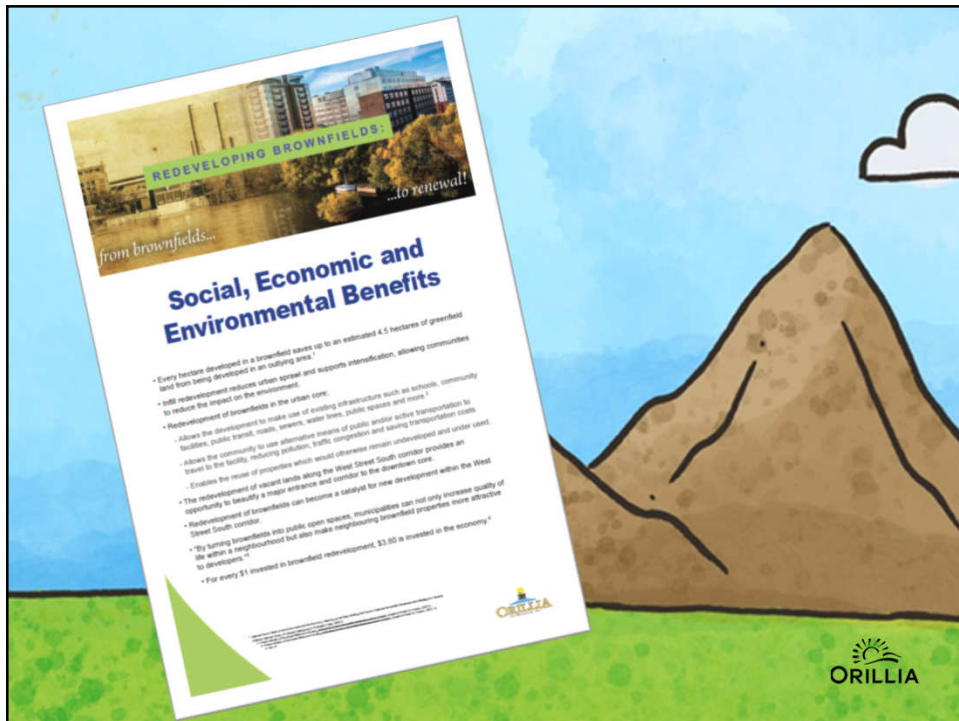
23



24



25



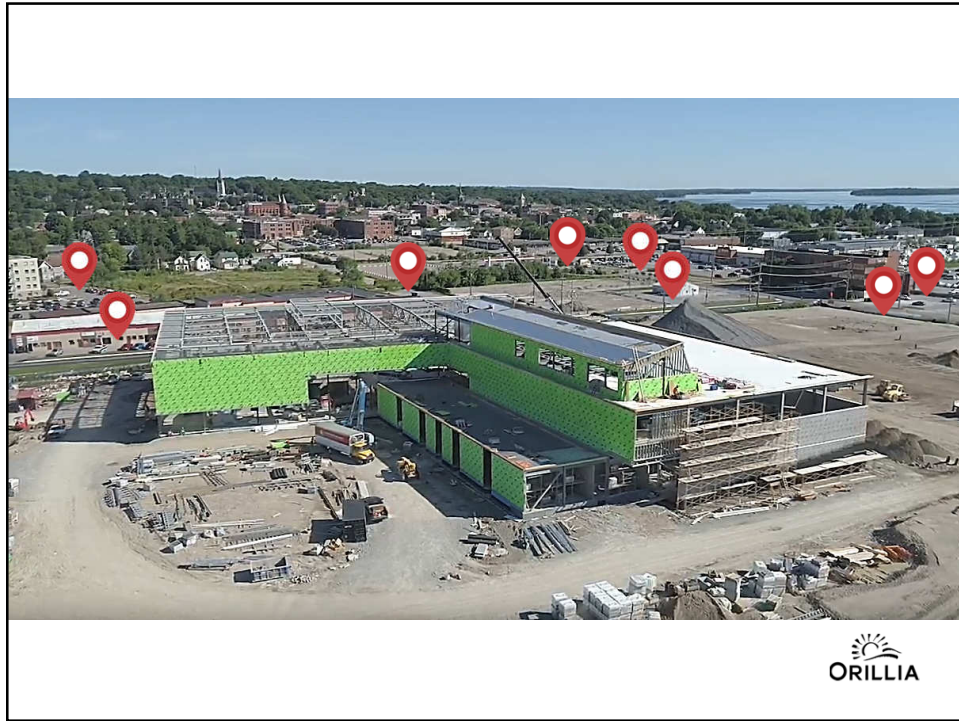
26



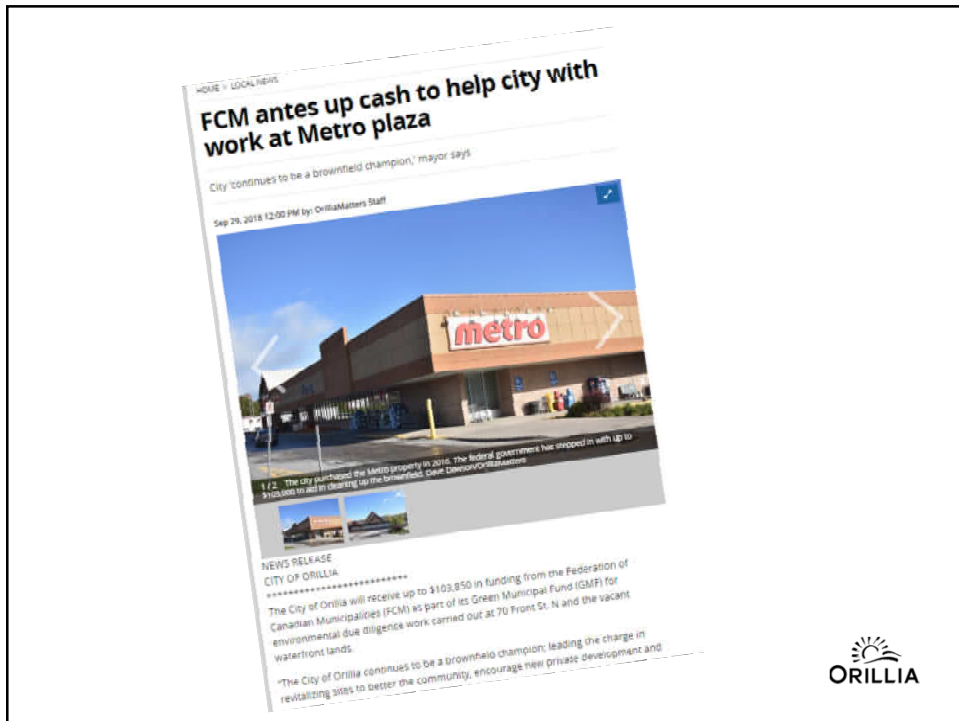
27




28



29



30



**Major Projects**

- Community Investment Opportunity with Hydro One
- Downtown Tomorrow CIP

## Waterfront Redevelopment Project

Home / Inside City Hall / Major Projects / Waterfront Redevelopment Project


In 2012, the City adopted the Downtown Tomorrow Plan, which set out a long term vision to better connect the downtown core and waterfront area. In 2014, the City acquired 70 Front Street North, an underutilized parcel of land which contained a large commercial plaza, with the intent to extend Coldwater Street to Centennial Drive and facilitate redevelopment of the southern portion of the plaza.

Due diligence reports and investigations completed for 70 Front Street North:

- Phase I Environmental Site Assessment
- Phase II Environmental Site Assessment
- Supplemental Phase II Environmental Site Assessment
- Screening Level Risk Assessment
- 2018 Groundwater Sampling Event

Due diligence reports and investigations completed for City-owned Vacant Lands:

- Phase One Environmental Site Assessment
- Phase One Environmental Site Assessment - Figures
- Phase One Environmental Site Assessment - Appendices, 1 of 2
- Phase One Environmental Site Assessment - Appendices, 2 of 2
- Phase Two Environmental Site Assessment
- Remedial Action Plan - Mixed Land Use
- Remedial Action Plan



31



32





33



34



35



36



37



38